

# GAYATRI COLLEGE OF SCIENCE & MANAGEMENT

(Affiliated to Dr.B.R.AMBEDKAR UNIVERSITY)  
ACCREDITED WITH NAAC & ISO  
Munasabpetta, SRIKAKULAM – 532401

## STAKEHOLDERS FEEDBACK ANALYSIS REPORT FOR THE ACADEMIC YEAR 2019-20

(Employer's)

### OBJECTIVE OF FEEDBACK:

The institution aims to offer the best possible environment and learning experience to encourage students to perform to their full potential for academic achievement.

Stakeholders i.e., students, teachers, employers play an important role in the evaluation development and enhancement of quality of this learning process.

Hence, the institution collects feedback from all the stakeholders i.e., students, teachers, employers and alumni every academic year on curriculum/syllabi to evaluate it's service policies can be revised and make changes as per stakeholders requirements.

### EMPLOYER'S FEEDBACK:


Our employer's are our major stakeholders, feedback of whom gives us input regarding enhancing the employability of our students.

Their feedback is valuable for us as it provides the basis for further enrichment in curriculum aspects and overall performance of students.

### EMPLOYER'S FEEDBACK ANALYSIS

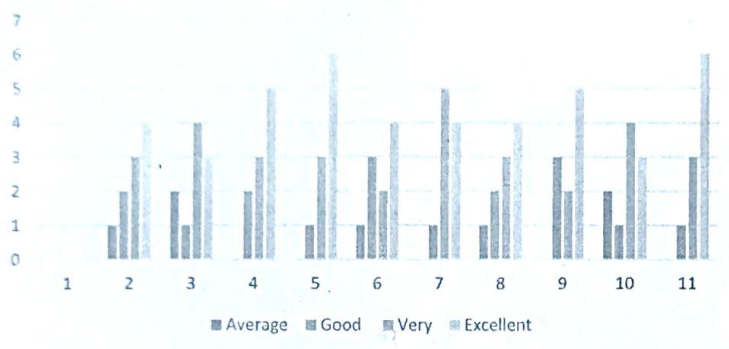
Total Respondents: 10

S.no	Parameters	Average	Good	Very Good	Excellent
1	Communication and Attitude	1	2	3	4
2	Technical knowledge and skills	2	1	4	3
3	Quality and relevance of the curriculum and syllabus with the chosen discipline	0	2	3	5
4	The curriculum promotes leadership Qualities	0	1	3	6
5	The curriculum promotes team work mentality	1	3	2	4

  
PRINCIPAL  
Gayatri College of Science & Management  
Munasabpetta-Srikakulam-532 401


6	The curriculum has relevance to industrial needs	0	1	5	04
7	The curriculum ensures Professional ethics and attitude	1	2	3	4
8	The curriculum enhances problem solving mentality and ability to innovate	0	3	02	05
9	Your level and satisfaction with teaching/ learning facilities provided by the college	2	1	04	03
10	Overall impression about the organization	0	1	03	06

### Feedback on Curricula 2019-20 Employer's Feedback Report



### SUMMARY:

- From the graph, 100% of the employer's gave feedback as excellent on Technical knowledge and skills.
- From the graph, 75% of the employer's gave feedback as excellent that the curriculum has relevance to industrial needs.
- From the graph, 100% of the employer's gave feedback as very good on the Communication and attitude.
- From the graph, 100% of the employer's gave feedback as excellent on Overall impression about the organization.

  
**PRINCIPAL**  
 Gayatri College of Science & Management  
 Munasampeta-Srikakulam-532 401